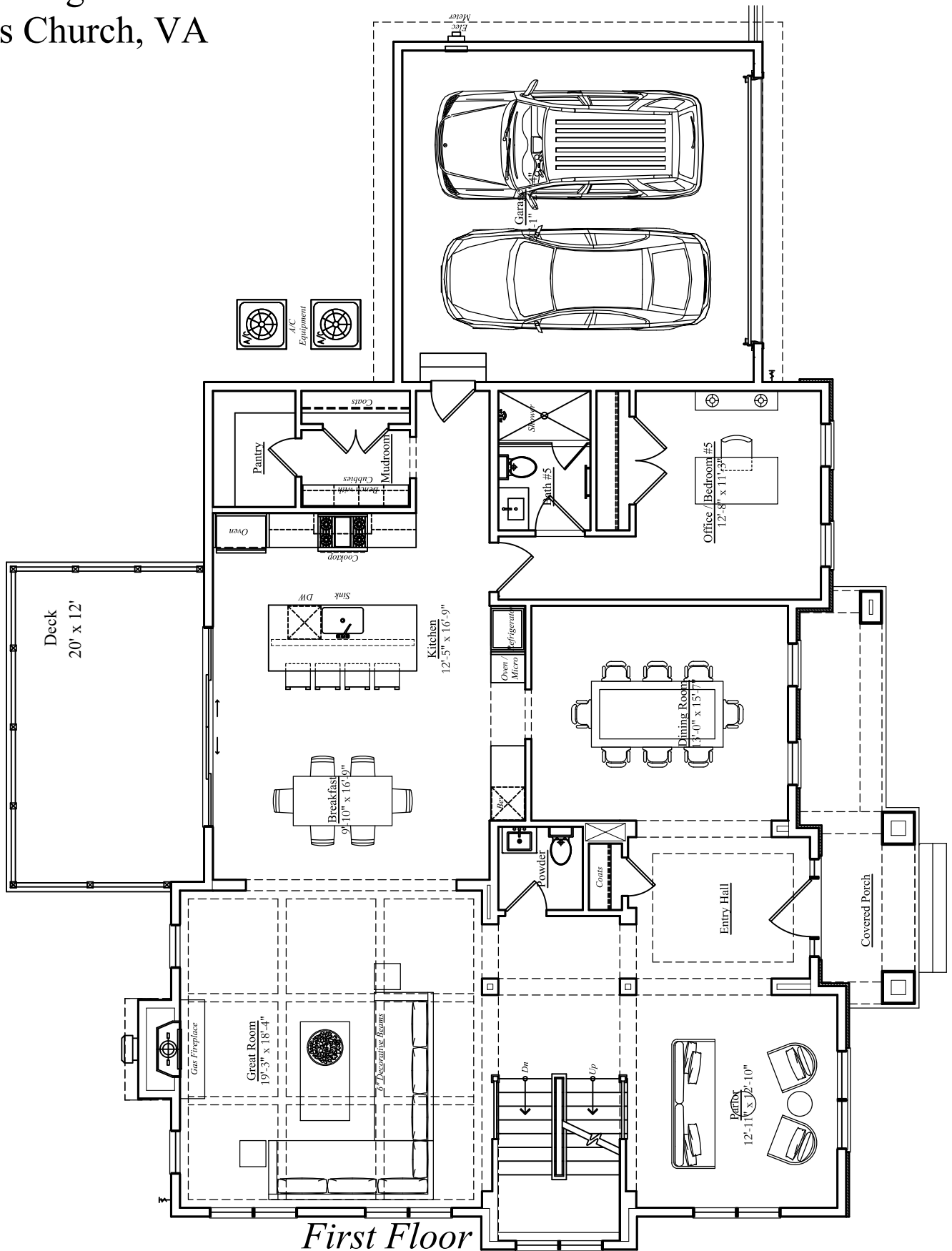


# 7107 Penguin Place Falls Church, VA



## First Floor

Finished Area Above Grade: 1,987 sq.ft.

Garage: 463 sq. ft.

Deck: 238 sq.ft., Front Porch: 138 sq. ft.

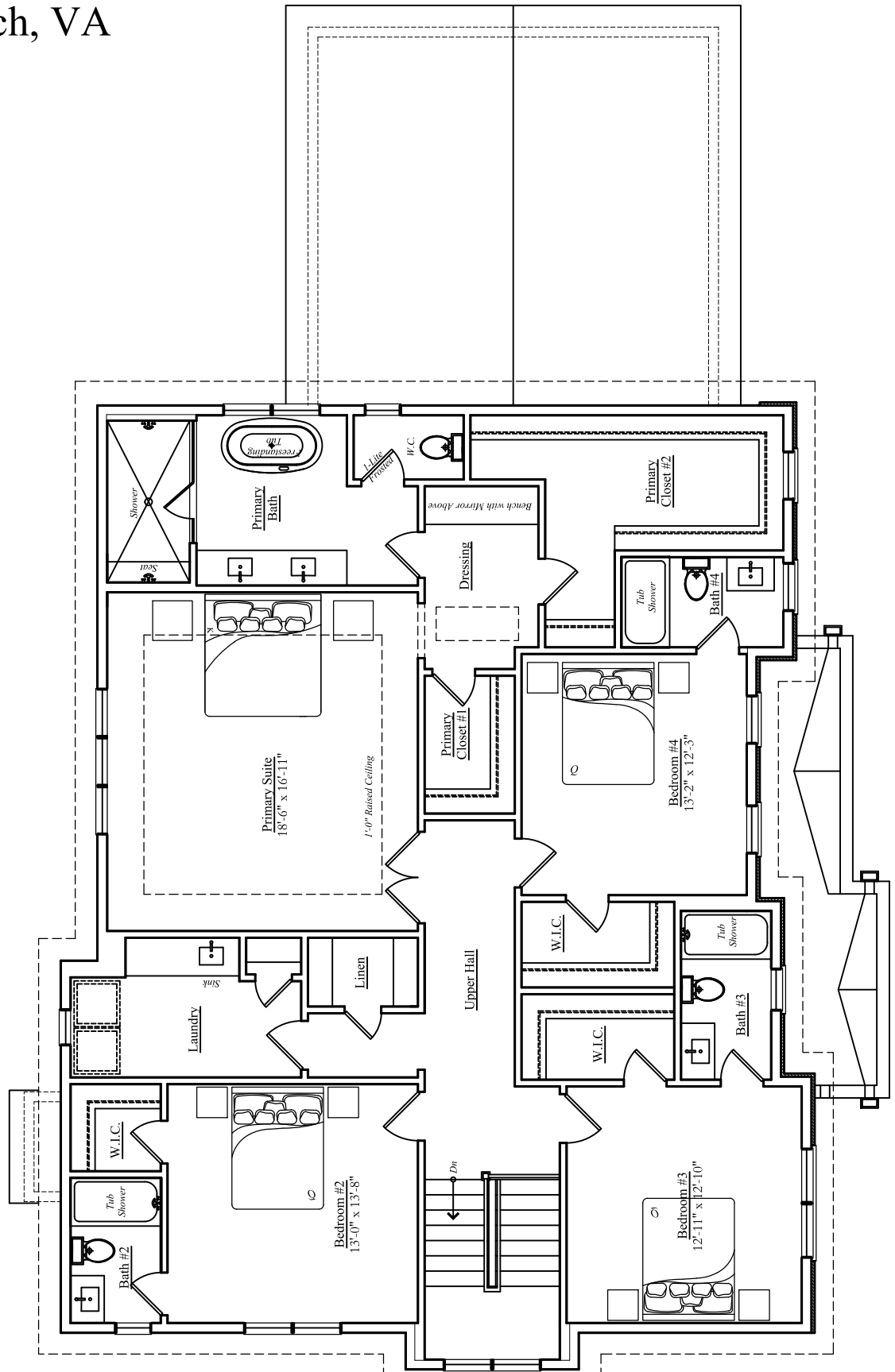
Finished square footage calculations for this house were made based on plan dimensions only and may vary from the finished square footage of the house as built. Areas calculated per the American National Standard For Single-Family Residential Buildings, Approved June 2013: ANSI Z765-2013  
Note: Stormwater Planter Design subject to change.



12/01/2025



7107 Penguin Place  
Falls Church, VA



### Second Floor

Finished Area Above Grade: 1,975 sq.ft.

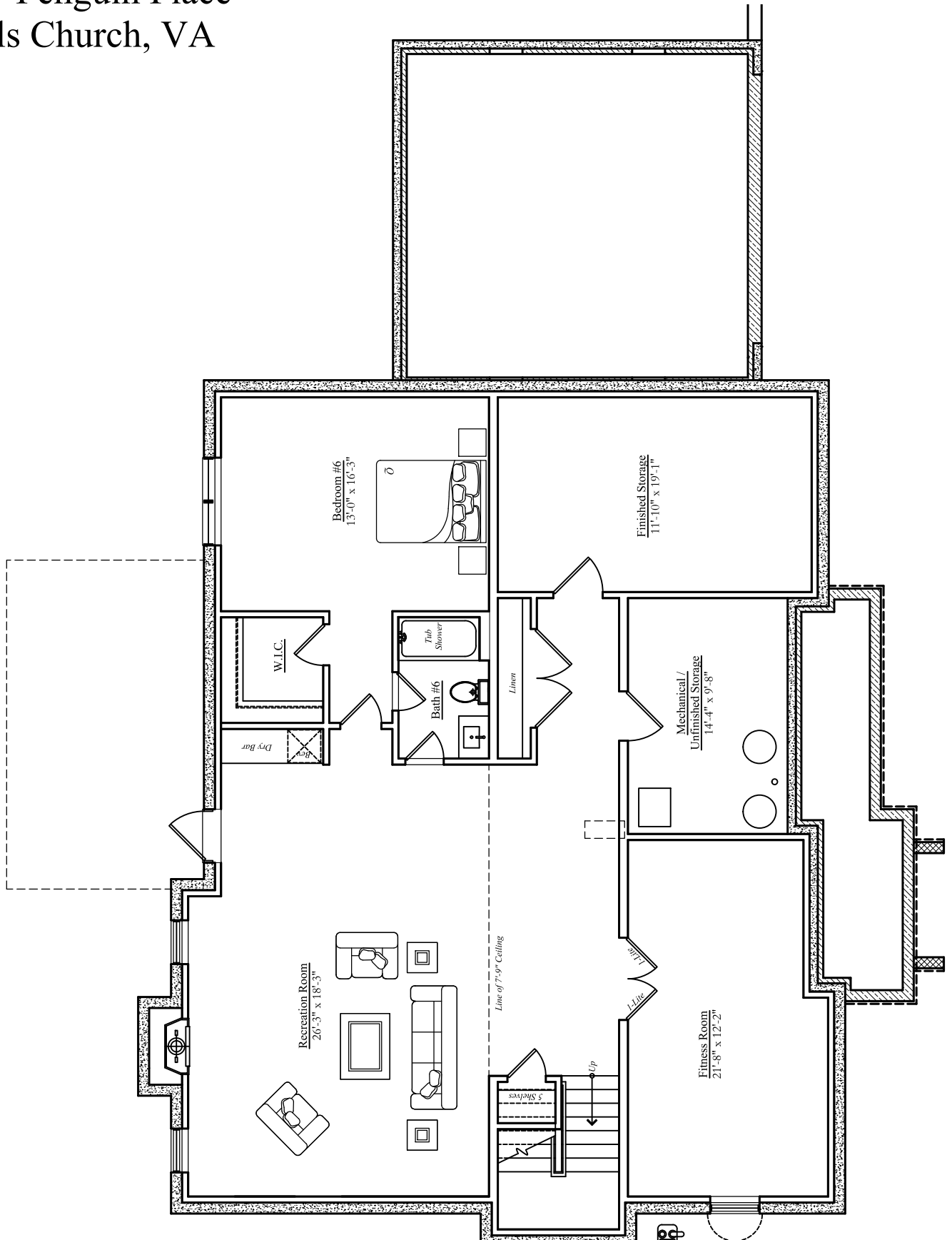
Finished square footage calculations for this house were made based on plan dimensions only and may vary from the finished square footage of the house as built. Areas calculated per the American National Standard For Single-Family Residential Buildings, Approved June 2013: ANSI Z765-2013  
Note: Stormwater Planter Design subject to change.



12/01/2025



7107 Penguin Place  
Falls Church, VA



### Basement Level

Finished Area Below Grade: 1,831 sq.ft.

Unfinished Area Below Grade: 146 sq. ft.

Finished square footage calculations for this house were made based on plan dimensions only and may vary from the finished square footage of the house as built. Areas calculated per the American National Standard For

Single-Family Residential Buildings, Approved June 2013: ANSI Z765-2013

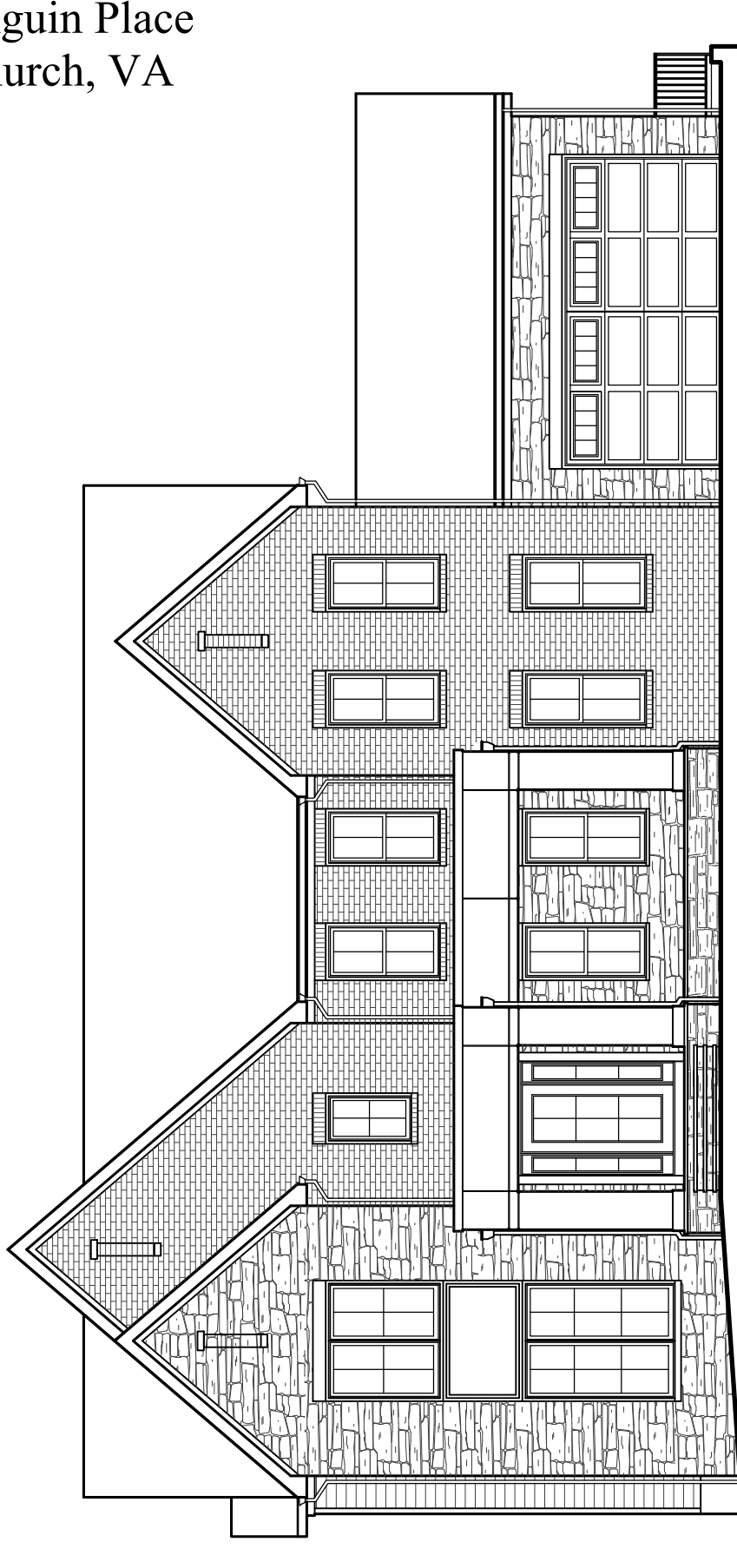
Note: Stormwater Planter Design subject to change.



12/01/2025



7107 Penguin Place  
Falls Church, VA



*Front Elevation*

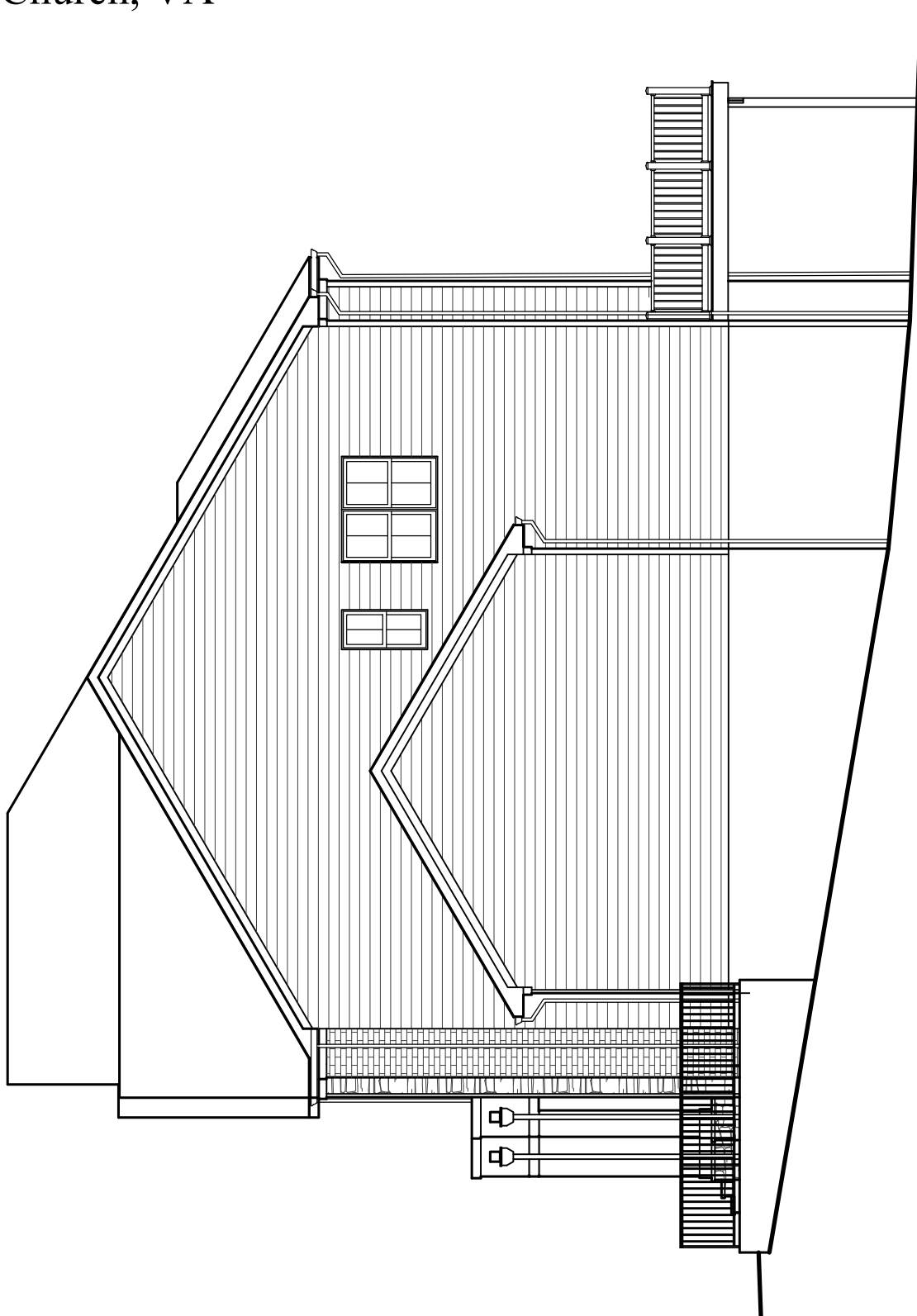
Finished square footage calculations for this house were made based on plan dimensions only and may vary from the finished square footage of the house as built. Areas calculated per the American National Standard For Single-Family Residential Buildings, Approved June 2013: ANSI Z765-2013  
Note: Stormwater Planter Design subject to change.



12/01/2025

**W**  
**W O R M A L D**

7107 Penguin Place  
Falls Church, VA



*Right Elevation*

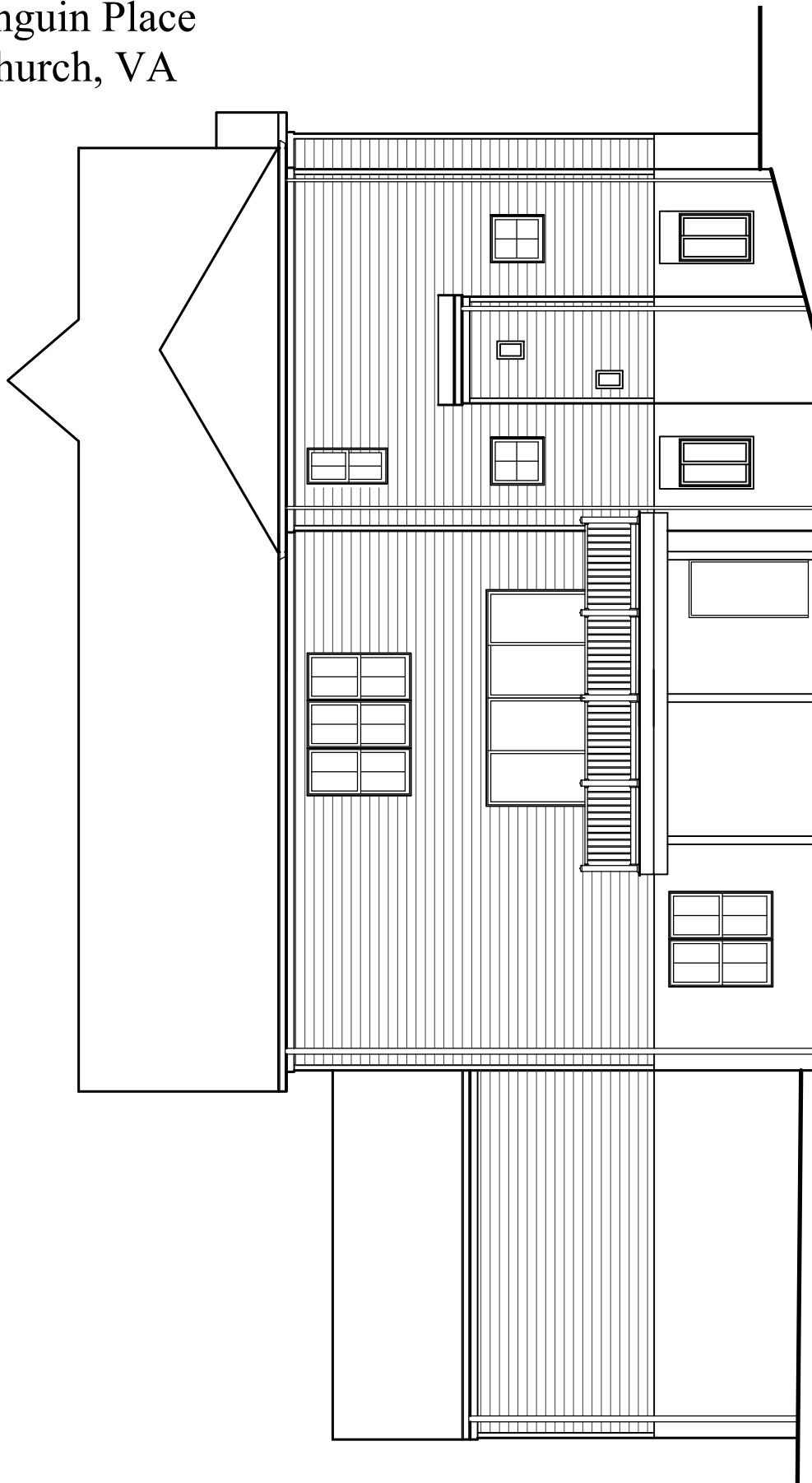
Finished square footage calculations for this house were made based on plan dimensions only and may vary from the finished square footage of the house as built. Areas calculated per the American National Standard For Single-Family Residential Buildings, Approved June 2013: ANSI Z765-2013  
Note: Stormwater Planter Design subject to change.



12/01/2025

**W**  
**W O R M A L D**

7107 Penguin Place  
Falls Church, VA



*Rear Elevation*

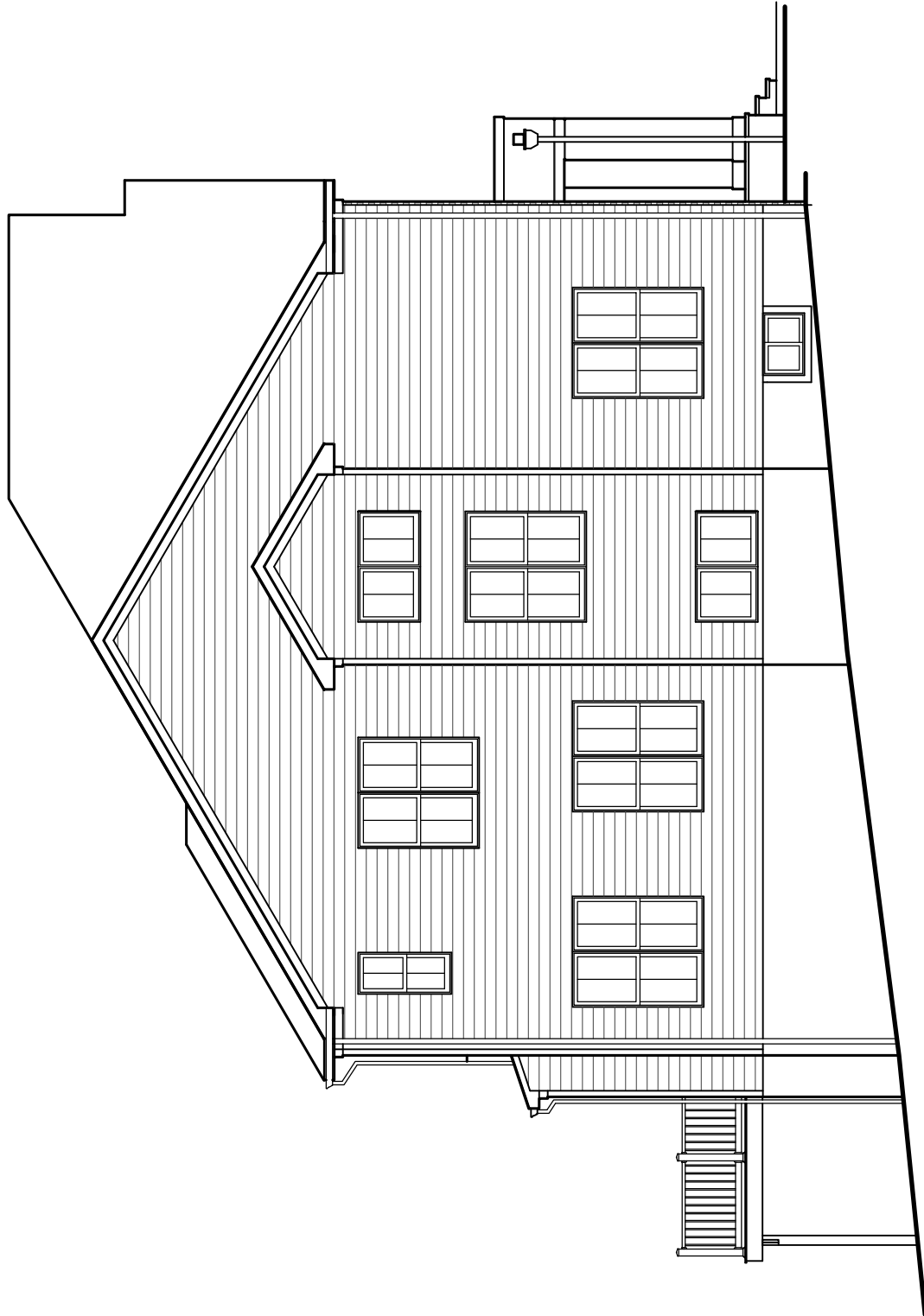
Finished square footage calculations for this house were made based on plan dimensions only and may vary from the finished square footage of the house as built. Areas calculated per the American National Standard For Single-Family Residential Buildings, Approved June 2013: ANSI Z765-2013  
Note: Stormwater Planter Design subject to change.



12/01/2025



7107 Penguin Place  
Falls Church, VA



*Left Elevation*

Finished square footage calculations for this house were made based on plan dimensions only and may vary from the finished square footage of the house as built. Areas calculated per the American National Standard For Single-Family Residential Buildings, Approved June 2013: ANSI Z765-2013  
Note: Stormwater Planter Design subject to change.



12/01/2025

