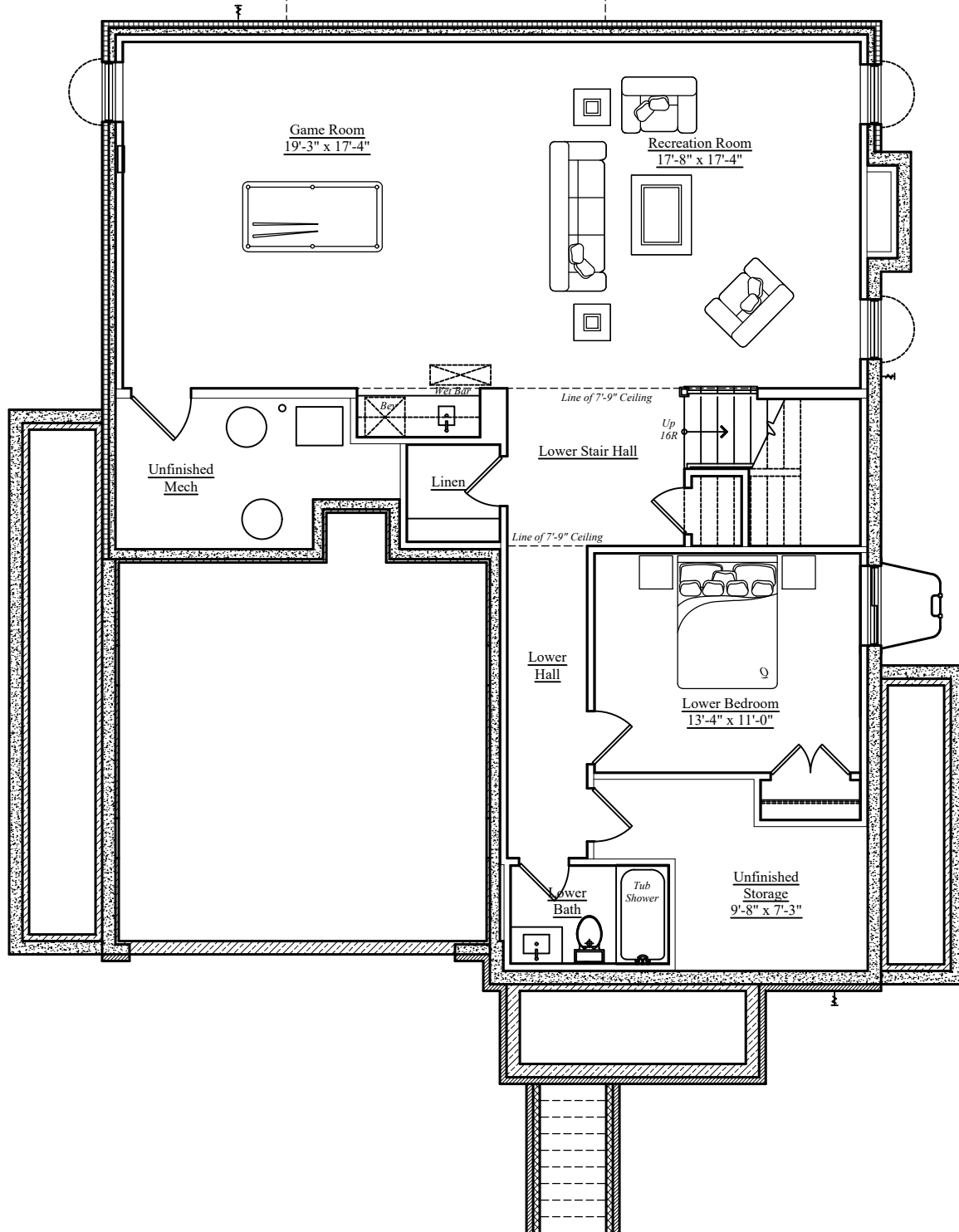


1601 N. Potomac St.
Arlington, VA



Basement Level

Finished Area Below Grade: 1,258 sq.ft.

Unfinished Area Below Grade: 220 sq. ft.

Finished square footage calculations for this house were made based on plan dimensions only and may vary from the finished square footage of the house as built. Areas calculated per the American National Standard For Single-Family Residential Buildings, Approved June 2013: ANSI Z765-2013
Note: Stormwater Planter Design subject to change.



05/01/2023

