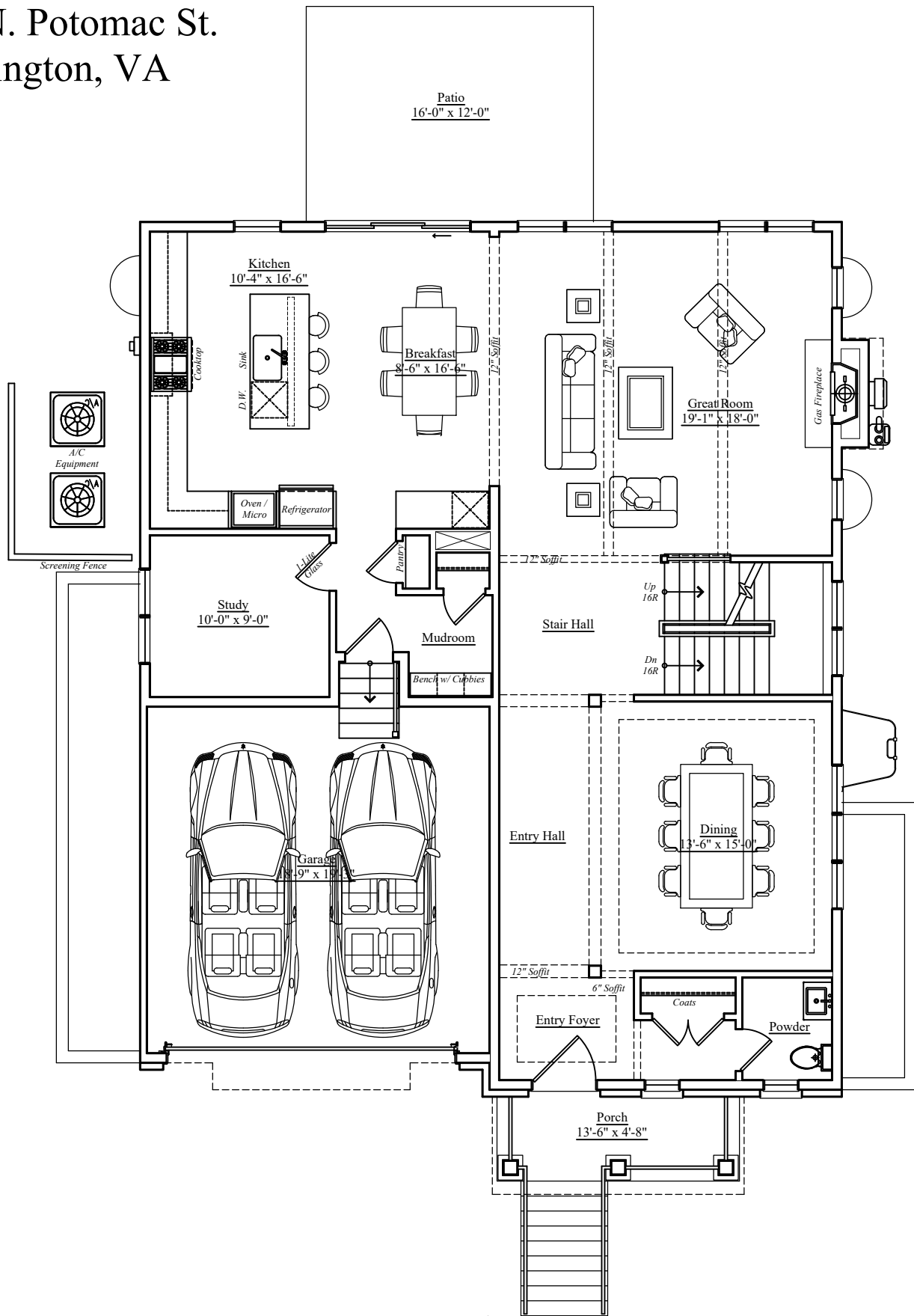


1601 N. Potomac St.
Arlington, VA



First Floor

Finished Area Above Grade: 1,471 sq.ft.

Garage: 401 sq. ft.

Patio: 192 sq.ft., Porch: 63 sq. ft.

Finished square footage calculations for this house were made based on plan dimensions only and may vary from the finished square footage of the house as built. Areas calculated per the American National Standard For Single-Family Residential Buildings, Approved June 2013: ANSI Z765-2013
Note: Stormwater Planter Design subject to change.



05/01/2023

