



# 2725 23RD ROAD N

ARLINGTON, VA 22201

## Total Finished Square Footage: 1,853 SQ FT

Above-Grade: 1,853 SQ FT Below-Grade: N/A  
Plus 54 SQ FT Storage on Upper Level  
Plus 1,029 SQ FT Storage/Mech Room on Lower Level  
Plus 75 SQ FT Storage Lower Level  
Plus 322 SQ FT Detached Garage  
Plus 322 SQ FT Storage (Detached Garage-Lower Level)  
Plus 100 SQ FT Storage Shed  
Calculated per ANSI Standard Z765-2003.

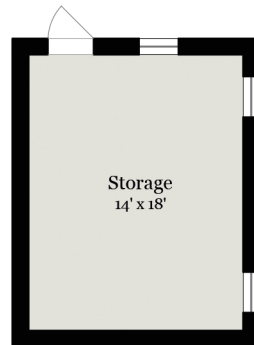
\* Total Finished & Unfinished Square Footage: 3,755 SQ FT



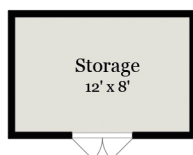
MAIN RESIDENCE  
MAIN LEVEL  
1,130 SQ FT



DETACHED GARAGE  
FIRST FLOOR  
322 SQ FT



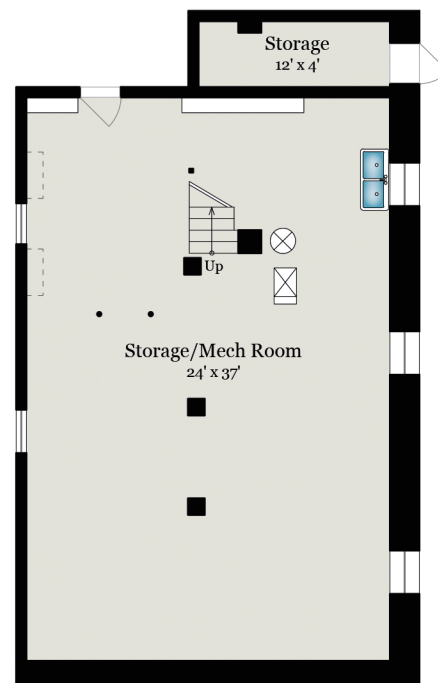
DETACHED GARAGE  
BASEMENT  
322 SQ FT



SHED  
100 SQ FT



MAIN RESIDENCE  
UPPER LEVEL  
723 SQ FT



MAIN RESIDENCE  
LOWER LEVEL  
1,104 SQ FT