

# 2905 TAJ DRIVE

OAKTON, VA 22124

**Total Finished  
Square Footage: 5,189 SQ FT**

Above-Grade: 3,833 SQ FT Below-Grade: 1,356

Plus 600 SQ FT 2-Car Garage on Lower Level

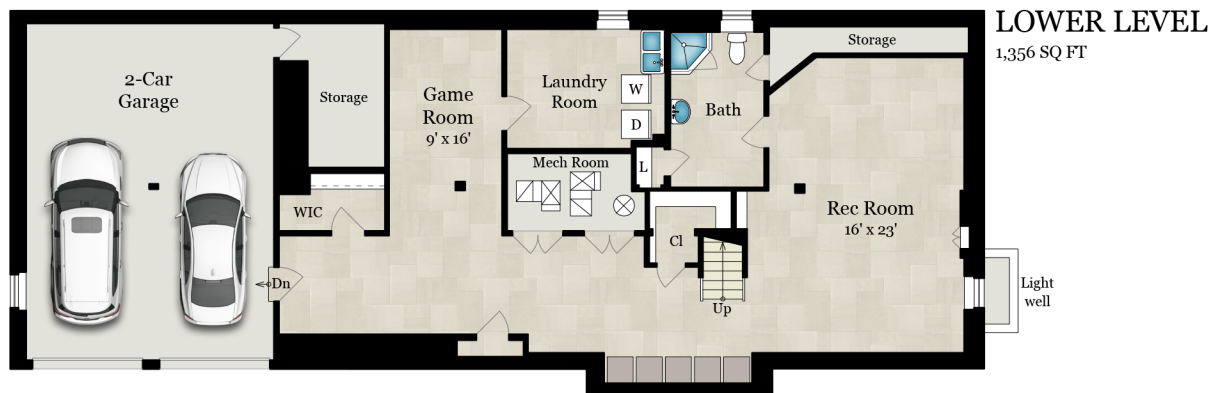
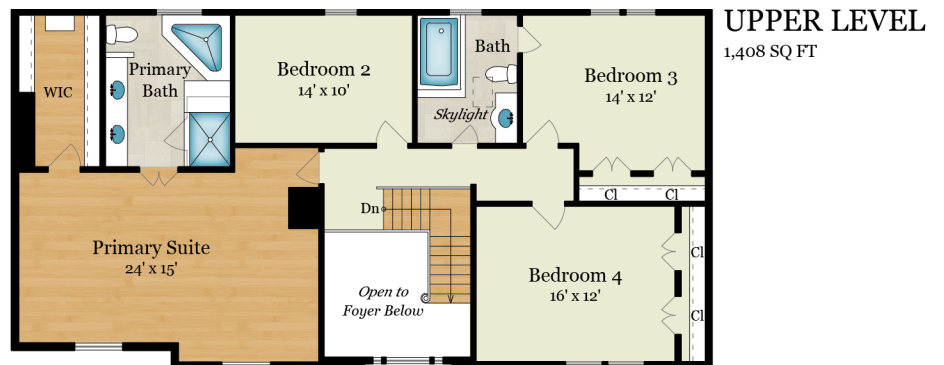
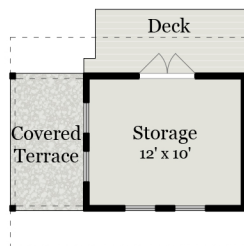
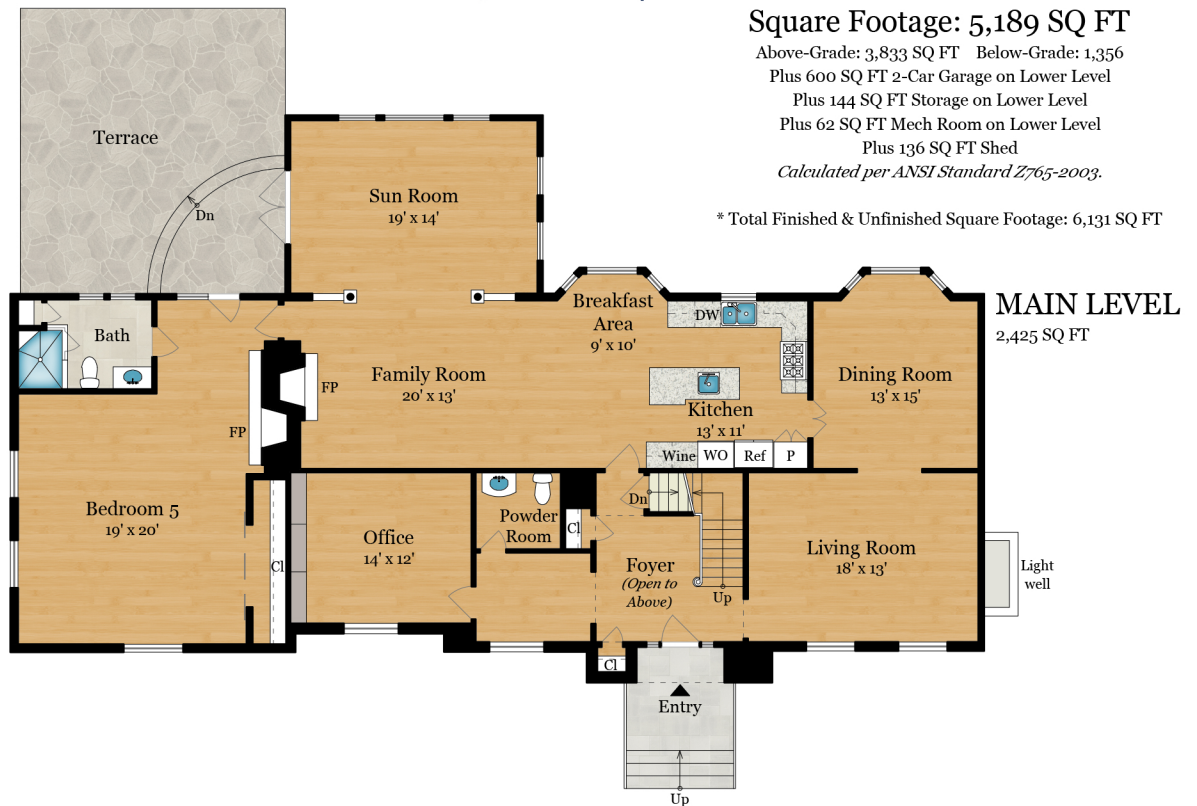
Plus 144 SQ FT Storage on Lower Level

Plus 62 SQ FT Mech Room on Lower Level

Plus 136 SQ FT Shed

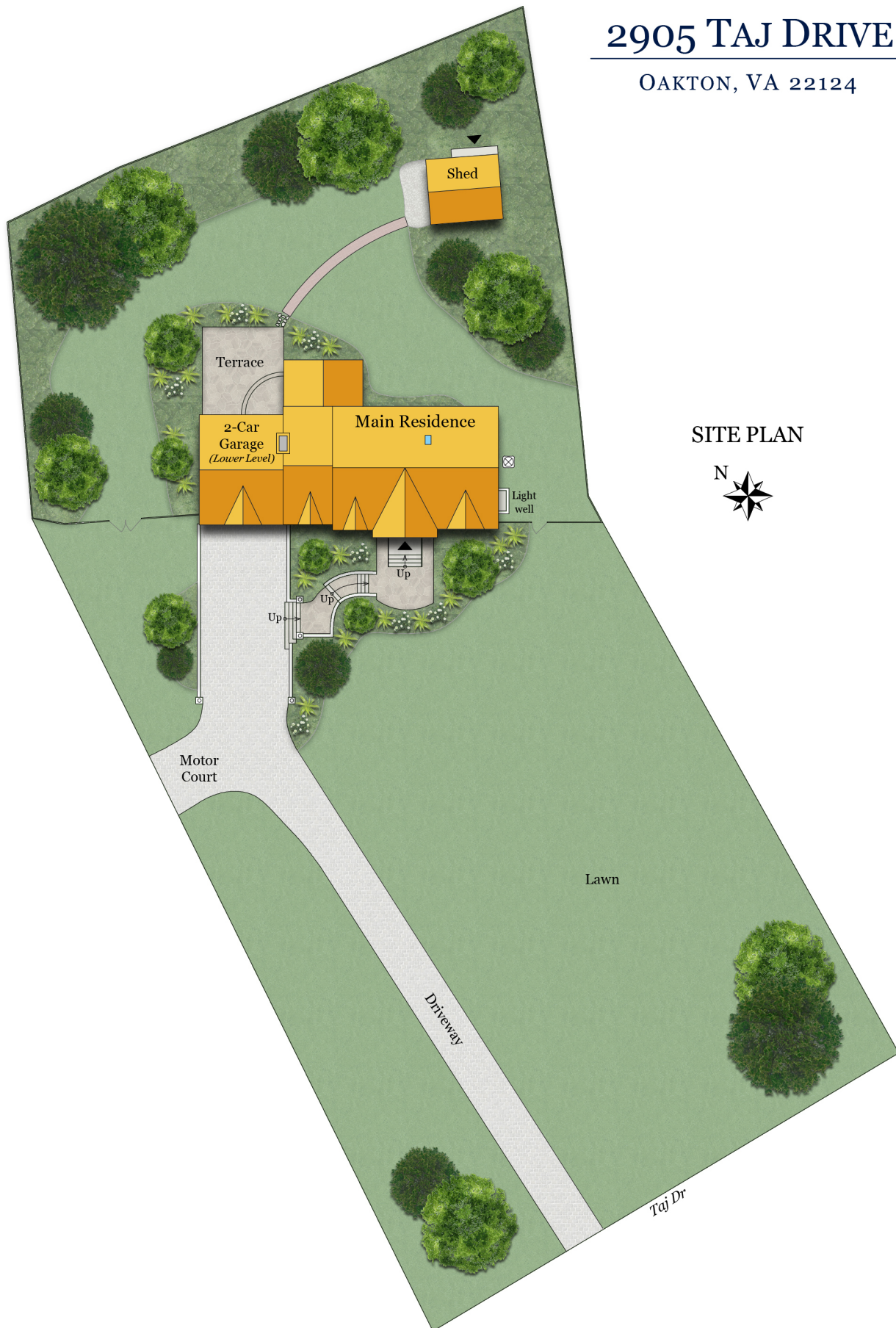
*Calculated per ANSI Standard Z765-2003.*

\* Total Finished & Unfinished Square Footage: 6,131 SQ FT



# 2905 TAJ DRIVE

OAKTON, VA 22124



SITE PLAN

