

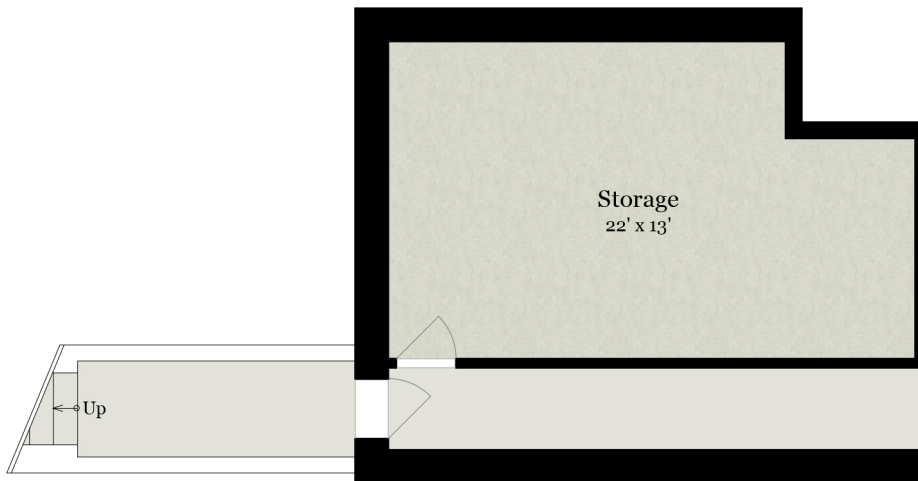
1221 KENYON STREET, NW | UNIT 1

WASHINGTON, DC 20010



MAIN LEVEL

1,115 SQ FT



BASEMENT

305 SQ FT

Estimated Total Square Footage: 1,420 SQ FT

Calculated from outside face of exterior walls and center line of demising walls.



Rendering by Floor Plan Visuals.
All measurements are approximate. While deemed reliable, no information on these floor plans should be relied upon without independent verification.

Presented by Andrew Musser, The Musser Team
Tel: 703.966.2180
Email: andy@themusserteam.com