

Andy Musser & Keller Williams Realty

# 1501 SPRING VALE AVENUE

MCLEAN, VA 22101

703-966-2180 (MOBILE) | 703-533-1500 (OFFICE) | [ANDY@THEMUSSERTEAM.COM](mailto:ANDY@THEMUSSERTEAM.COM)

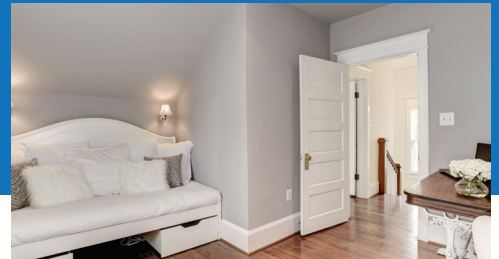
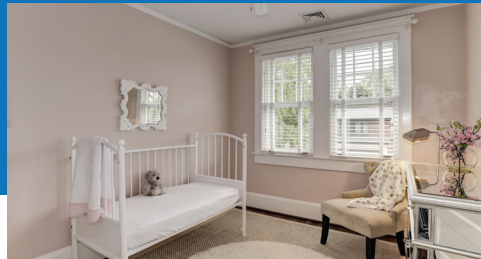
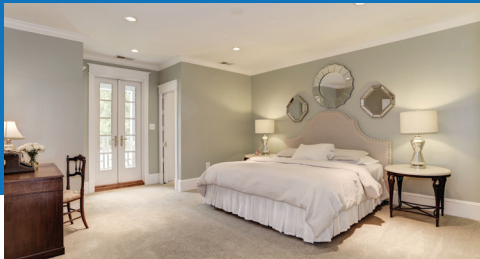
**FOR SALE**



## Welcome Home to West McLean!

Classic Craftsman Style Bungalow in Downtown McLean sited on Prime Quarter Acre Lot. Come and see this thoughtfully renovated and restored 4 bedroom, 3 and 1/2 bath Sears Bungalow that matches time-honored character with modern convenience. Features include an expanded kitchen with custom cabinetry, recessed lights and island, family room with wood burning fireplace, large master suite w/ 2 walk-in closets, and lower level in-law suite w/ private entrance. Walk to coffee, grocery, shops, restaurants, racquetball club.

Take the **Virtual Tour** at [www.SpringValeAve.com](http://www.SpringValeAve.com)!



## Features & Amenities

### General

- Large Covered Front Porch
- Wood Burning Fireplace
- Pine Heart and Oak Wood Floors
- Freshly Painted Throughout
- Landscaped Yard
- Deck | *Perfect for Grilling and Entertaining*
- Garden Shed

### Main Level

#### FOYER

- Oak Wood Floor
- Crown Molding

#### KITCHEN

- Pine Heart Wood Floor
- Absolute Black Polished Granite Countertop w/ Undermount Sink
- Dynasty Omega Cabinets
- Under Cabinet Lighting
- Recessed Lighting
- Heartland Gas Range/Oven
- Bosch Dishwasher
- Subzero Refrigerator

#### LIVING ROOM

- Oak Wood Floor
- Crown Molding

### DINING ROOM

- Oak Wood Floor
- Crown Molding
- New Light Fixture
- French Doors from Living Room

### FAMILY ROOM

- Wool Carpet
- Crown Molding
- Recessed Lighting
- Wood Burning Fireplace

### HALF BATH

- Antique Farm Sink
- Flagstone Flooring
- Beadboard

### Upper Level

#### MASTER BEDROOM

- Crown Molding
- Recessed Lighting
- Juliet Balcony
- Dual Walk-In Closets
- Built-Ins
- Custom Home Office Option

#### MASTER BATHROOM

- Faleri Console Sinks
- Updated Stand Up Shower w/ Subway Tile Surround
- Tile Floor
- Updated Light Fixtures

- LG Front Loading Washer & Dryer

#### BEDROOM 2

- Heart Pine Wood Floor
- Crown Molding
- Lighted Ceiling Fan
- Ample Closet

#### BEDROOM 3

- Heart Pine Wood Floor
- Recessed Lighting
- Large Closet

#### HALL BATH

- Claw Foot Tub
- Crown Molding
- Tile Floor
- Recessed Lighting

### Lower Level

#### IN-LAW SUITE

- New Carpet
- Recessed Lighting
- Heated Floors
- Walk-In Closet
- Separate Entrance

#### FULL BATH

- Heated Floors
- Marble Dual Vanity
- Tile Floor
- Large Shower

### UTILITY ROOM

- Front-Loading Samsung Washer & Dryer
- Boiler
- 400 amp Electrical Service
- Upgraded to One Inch Water Line

### BACKYARD

- Professionally Landscaped
- Deck with Flagstone Patio
- Hot Tub (As Is)
- Garden Shed

### Location

- Steps to Downtown McLean | Walk to Starbucks, Giant, Post Office, and More
- Easy Access to 495, Tysons Corner, Washington D.C.
- Franklin Sherman Elementary, Longfellow Middle, McLean High

*Information deemed reliable, but not guaranteed.*



**Contact Andy Musser today!**

703-966-2180 (MOBILE) | 703-533-1500 (OFFICE) | [ANDY@THEMUSSERTEAM.COM](mailto:ANDY@THEMUSSERTEAM.COM)